

# PHILIPS

# Lighting



## MHN-TD

### MHN-TD 150W/842 RX7s 1CT/12

Double-ended quartz Metal-halide lamp

#### Product data

| General Information         |   |
|-----------------------------|---|
| Cap-Base                    | RX7S [ RX7s]  |
| Operating Position          | P45 [ Parallel +/-45D or Horizontal(HOR)]   |
| Life to 5% Failures (Min)   | 4000 h  |
| Life to 5% Failures (Nom)   | 5000 h  |
| Life to 20% Failures (Min)  | 6500 h  |
| Life to 20% Failures (Nom)  | 8000 h  |
| Life to 50% Failures (Min)  | 8500 h  |
| Life to 50% Failures (Nom)  | 10500 h   |
| ANSI Code HID               | M81/E   |
| Footnotes HID 1             | Color characteristics may vary somewhat from one lamp type to another. Time should be allowed for the lamp to stabilize in color when it is turned on for the first time or if for any reason its operating position is changed. This may require several hours' operation, with more than one start. Lamp color and output may change temporarily if the lamp is subjected to excess vibration or shock. Lamp color characteristics may change after long accumulate operating time. |
| Footnotes HID 2             | Supply volts must be +/- 5% of rated ballast line volts for reactor type and +/- 10% for CWA or electronic ballasts.  |
| Light Technical             |   |
| Color Code                  | 842 [ CCT of 4200K]   |
| Luminous Flux (Rated) (Min) | 11600 lm  |
| Luminous Flux (Rated) (Nom) | 12900 lm  |

| Color Designation                  | Cool White (CW) |
|------------------------------------|-----------------|
| Lumen Maintenance 10000 h (Min)    | 60 %            |
| Lumen Maintenance 10000 h (Nom)    | 70 %            |
| Lumen Maintenance 2000 h (Min)     | 74 %            |
| Lumen Maintenance 2000 h (Nom)     | 80 %            |
| Lumen Maintenance 5000 h (Min)     | 68 %            |
| Lumen Maintenance 5000 h (Nom)     | 75 %            |
| Chromaticity Coordinate X (Nom)    | 370             |
| Chromaticity Coordinate Y (Nom)    | 370             |
| Correlated Color Temperature (Nom) | 4200 K          |
| Luminous Efficacy (Rated) (Min)    | 75 lm/W         |
| Luminous Efficacy (Rated) (Nom)    | 86 lm/W         |
| Color Rendering Index (Nom)        | 85              |
| Operating and Electrical           |                 |
| Power (Rated) (Nom)                | 150.0 W         |
| Lamp Current Run-Up (Max)          | 2.4 A           |
| Lamp Current (EM) (Nom)            | 1.8 A           |
| Ignition Supply Voltage (Max)      | 198 V           |
| Ignition Peak Voltage (Max)        | 5000 V          |
| Ignition Supply Voltage (Min)      | 198 V           |
| Ignition Peak Voltage (Min)        | 3500 V          |
| Voltage (Max)                      | 108 V           |
| Voltage (Min)                      | 88 V            |
| Voltage (Nom)                      | 98 V            |

# MHN-TD

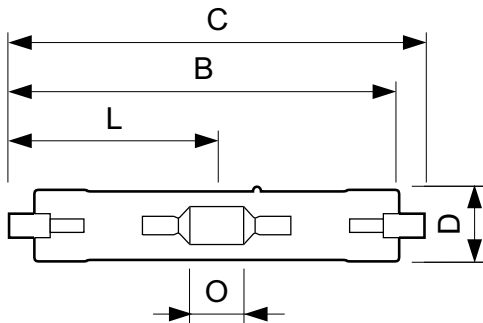
| Controls and Dimming          |         |
|-------------------------------|---------|
| Dimmable                      | No      |
| Mechanical and Housing        |         |
| Bulb Finish                   | Clear   |
| Cap-Base Information          | -       |
| Approval and Application      |         |
| Energy Efficiency Label (EEL) | A+      |
| Mercury (Hg) Content (Nom)    | 13 mg   |
| Energy Consumption kWh/1000 h | 165 kWh |
| Luminaire Design Requirements |         |
| Bulb Temperature (Max)        | 650 °C  |

| Pinch Temperature (Max)         | 280 °C                        |
|---------------------------------|-------------------------------|
| Product Data                    |                               |
| Full product code               | 871829121536300               |
| Order product name              | MHN-TD 150W/842 RX7s 1CT/12   |
| EAN/UPC - Product               | 8718291215363                 |
| Order code                      | 928076505190                  |
| Numerator - Quantity Per Pack   | 1                             |
| Numerator - Packs per outer box | 12                            |
| Material Nr. (12NC)             | 928076505190                  |
| Net Weight (Piece)              | 0.028 kg                      |
| ILCOS Code                      | MD/UB-150/842-H-RX7s-25/135.4 |

## Warnings and Safety

- Use only in totally enclosed luminaire, even during testing (IEC61167, IEC 62035, IEC60598)
- The luminaire must be able to contain hot lamp parts if the lamp ruptures
- Control gear must include end-of-life protection (IEC61167, IEC 62035)
- A lamp breaking is extremely unlikely to have any impact on your health. If a lamp breaks, ventilate the room for 30 minutes and remove the parts, preferably with gloves. Put them in a sealed plastic bag and take it to your local waste facilities for recycling. Do not use a vacuum cleaner.

## Dimensional drawing

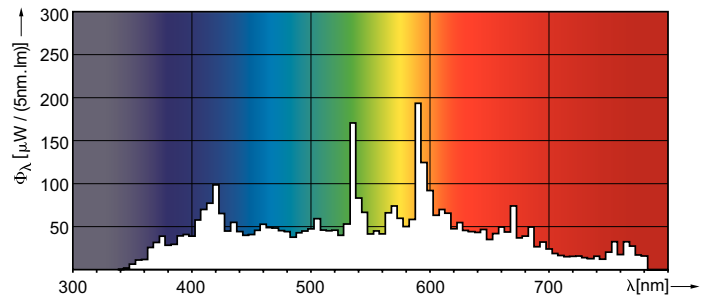
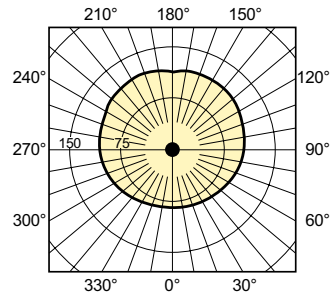
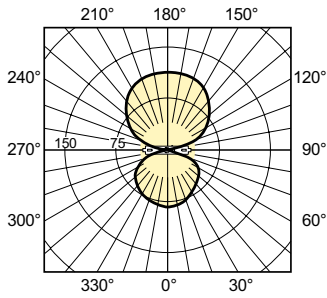


MHN-TD 150W/842 RX7s

| Product                     | D (max) | D       | O       | C (max)  |
|-----------------------------|---------|---------|---------|----------|
| MHN-TD 150W/842 RX7s 1CT/12 | 23.0 mm | 0.89 in | 17.8 mm | 135.4 mm |

# MHN-TD

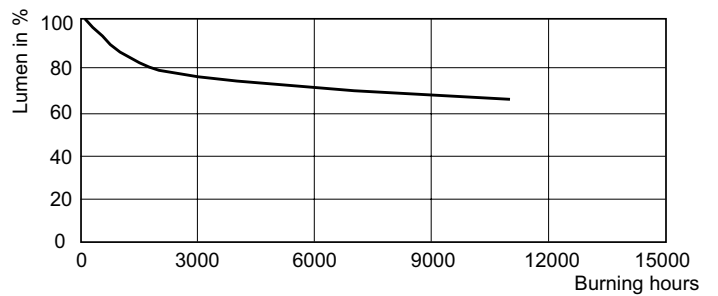
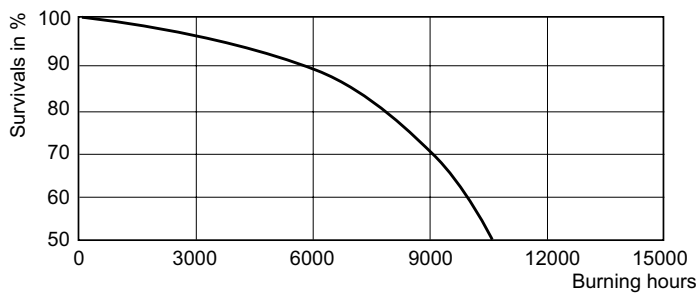
## Photometric data



MHN-TD

MHN-TD 70W & 150W

## Lifetime



MHN-TD 70 W, 150 W Life Expectancy /842

MHN-TD 70 W, 150 W Lumen Maintenance /842

